

EasyRX 868

RADIO CARD FOR EASY GATE CONTROLLER

installation manual

v. 1.0



GENERAL INFORMATION

EasyRX 868 radio card is designed for EASY gate controllers. EasyRX 868 radio receiver card is compatible with DTM868MHz transmitters.

TECHNICAL DATA

- ▶ designed for EASY gate controllers;
- ▶ easy remote registering without need to use receiver button;
- ▶ verifying number of registered remotes;
- ▶ IRS coding system;
- ▶ superheterodyne receiver, frequency 868 MHz;
- ▶ memory up to 200 remotes DTM868MHz series;
- ▶ power supply via gate controller connector;
- ▶ working temperature -20°C / +55°C;
- ▶ dimensions [mm]: 55 x 40 x 13.

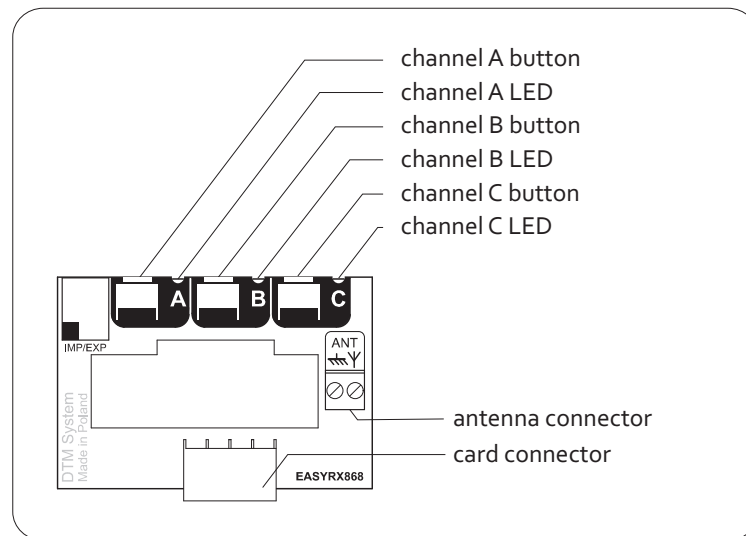


Fig.1 EasyRX 868 view.

1. Installation

Start with antenna connection. Next plug EASYRX card into RADIO-marked connector located on the control board (4 pins). To EASY232 controller plug EASYRX868 card in the direction of regulatory potentiometers. To EASY231 controller plug EASYRX868 card in the direction of low-voltage connectors.

2. Programming

2.1. Remote registering

Receiver has three identically programmed A, B and C channels analogue to OPEN A, OPEN B and OPEN C inputs in gate controller.

To register any button to first channel:

- ▶ push and hold channel A button;
- ▶ while holding channel A button press chosen remote button;
- ▶ channel A LED blink - registering completed;
- ▶ release channel A button.

To register to second B and third C channel proceed in the same way as for first channel using correct buttons.

Caution!

- ▶ registering another button does not erase previously registered button;
- ▶ attempt of registering into memory 201 transmitter will fail. LED will not blink.

2.2. Easy remote registering

Easy remote registering function allows registering new remotes without access to receiver button.

Previously registered remote is needed.

- a) press and hold for 15 seconds previously registered remote button, release button;
- b) in no more than 3 seconds press and hold new remote button for 15 seconds;
- c) new remote is registered with the same active button as in the previously registered remote.

Caution!

Failure in registering may be caused by low batteries, radio interferences or full memory of the receiver.

2.2.1. Easy remote registering function LOCK / UNLOCK

To protect receiver against unauthorized attempts of registering remote (important in access protected user zones) easy remote registering function must be locked.

To lock/unlock easy remote registering function press simultaneously A and B buttons on the card. Then release one button. LEDs A and B will light up alternately every 4 seconds. To lock/unlock easy remote registering release second button when:

- ▶ LED A - easy remote registering lock;
- ▶ LED B - easy remote registering unlock.

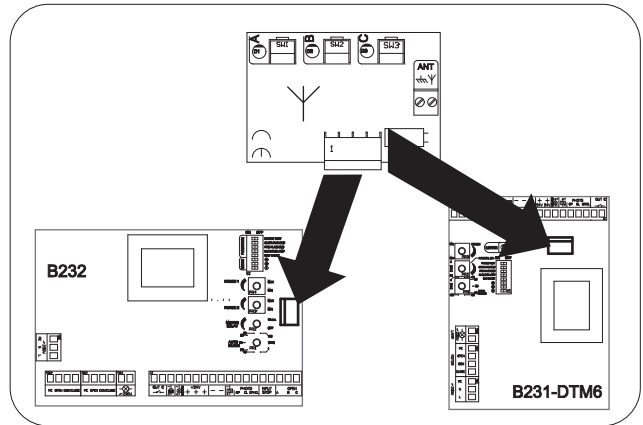


Fig.2 Installing EasyRX 868 card into EASY gate controller.

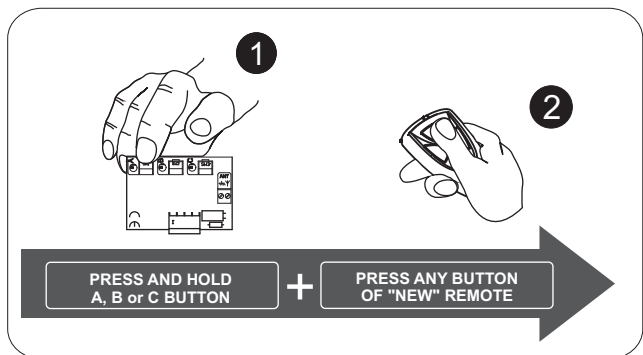


Fig.3 Remote button programming.

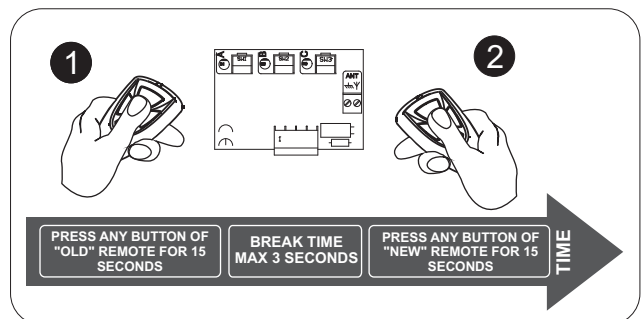


Fig.4 Easy remote registering.

2.3. Single remote removing form receiver memory

While holding receiver button press active button on the remote. If valid removal LED fade.

Caution!

Holding receiver button for more than 15 seconds will erase memory

2.4. Changing buttons registration to channel

- ▶ remove remote from memory (see section 2.3.)
- ▶ register remote according to section 2.1. or 2.2.

2.5. All remotes removing

To remove all remotes from receiver memory press and hold receiver A and B buttons for 15 seconds. Release button when LED fade.



Memory format unlock easy remote registering function.

2.6. Verifying number of registered remotes

To verify number of registered remotes prior registering or removing remote is required.

After registering or removing remote hold receiver button for 5 more seconds. LED will blink showing number of registered remotes. First number of tens (from 0 to 20 long pulses) then number of units (from 0 to 9 short pulses).

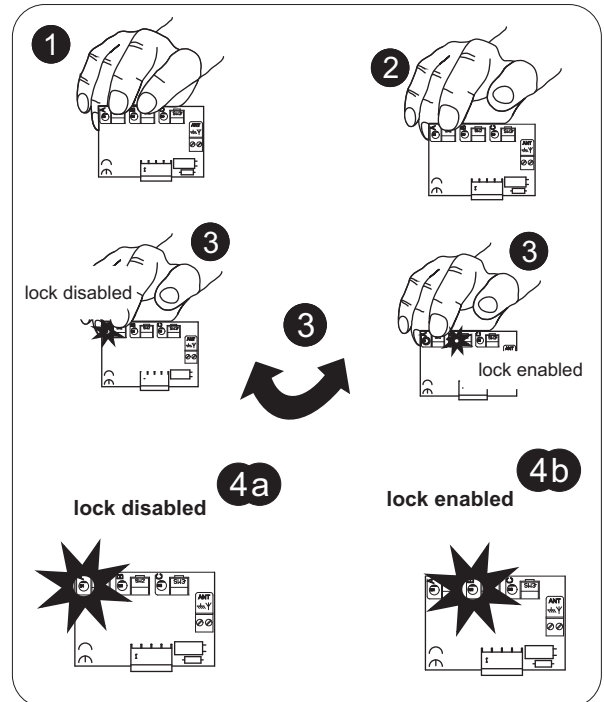


Fig.5 Lock disabled/enabled

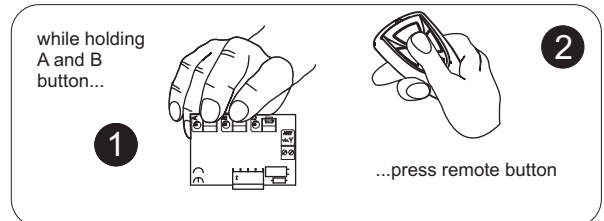


Fig.6 Single remote removing.

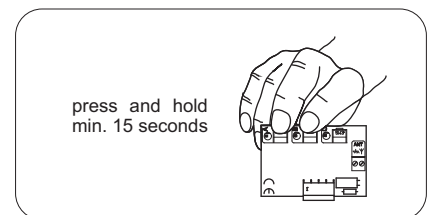


Fig.7 All remotes removing.

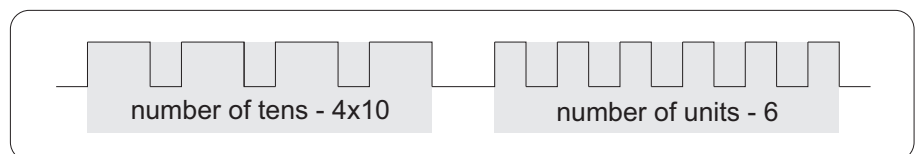


Fig.8 Pulses example showing number of registered remotes - 46.

DISPOSAL



The intention of the WEEE Directive (Directive 2002/96/EC on waste electrical and electronic equipment) is to reduce the amount of hazardous substances in waste. The underlying purpose is to promote the avoidance, recovery and risk-free disposal of waste.

WARRANTY

DTM System provides operational and ready to use devices. The producer gives 24 months warranty from the selling date to the end customer. This time is counted according to the producer warranty labels or serial numbers placed on every product. Producer obliges himself to repair the device for free if during the warranty period there are problems which come because of his fault. Broken device should be supplied on customer's expense to the place of purchase and enclose clear and brief description of the breakage. The cost of mount/dismount is covered by the user. The warranty does not cover: batteries in the remote controls, faults caused by improper usage, user self repairs and adaptations, lightning strikes, voltages or short circuits in the electrical grid. Appropriate legal acts regulate details of the warranty.



DTM System hereby declares that the radio receiver complies with Directive 2014/53 / EU. The full text of the EU

Declaration of Conformity is available at the Internet address: www.dtm.pl



DTM System spółka z ograniczoną odpowiedzialnością spółka komandytowa

ul. Brzeska 7
85-145 Bydgoszcz

TEL:
+48 52 340 15 83

FAX:
+48 52 340 15 84

E-MAIL:
serwis@dtm.pl