



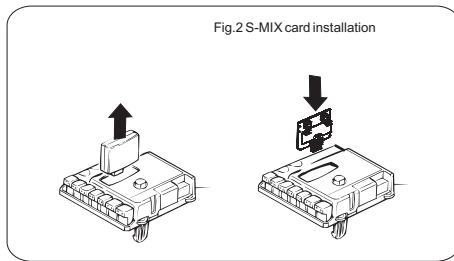
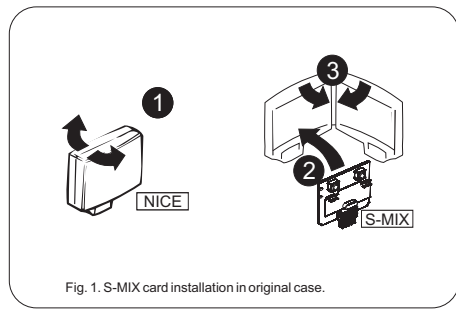
I. Main information

Radio card S-MIX is devoted for NICE gate controllers. It has two output channels. It is compatible with DTM radio remotes and almost all remotes with KeeLoq coding of other producers. Working with DTM remotes dynamically variable code Keeloq gives high class safety.

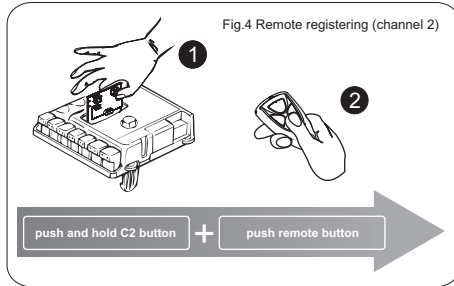
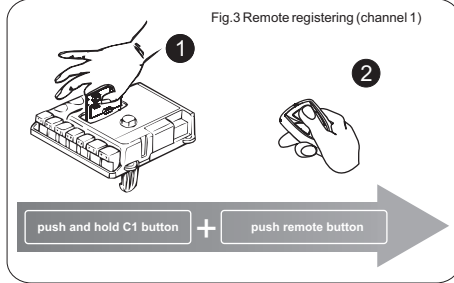
II. Technical data

- ▶ Cooperate with DTM, NICE and KeeLoq coding remotes of other producers
- ▶ Cooperate with NICE gate controllers compatible with SMILO
- ▶ Superheterodine receiver, work frequency 433,93MHz
- ▶ Memory up to 35 remotes
- ▶ Easy remote registering without need of using receivers buttons – only available if using DTM remotes
- ▶ Possibility to lock easy remote registering function
- ▶ Radio card supply from gate controller
- ▶ Max current constriction 15mA;
- ▶ Working temperature -20°C do +55°C;
- ▶ Dimensions: 42mm x 33mm x 10mm.

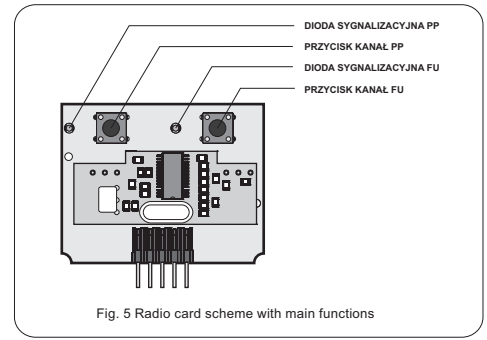
III. Radio card installation



IV. S-MIX programming
1. Remote registering

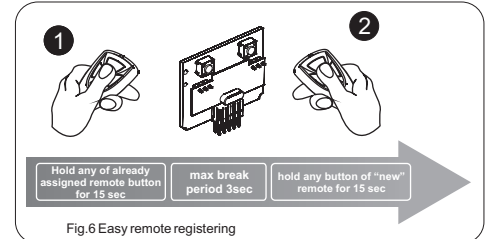


* while programming it is allowed to use any of remote buttons. Channel 1 and Channel 2 functions must be programmed in gate controller.



2. Easy remote registering

Remotes must be in radio range of receiver.



"New" remote has same configuration as already assigned one.

Easy registering is available only for DTM remotes.

Caution!

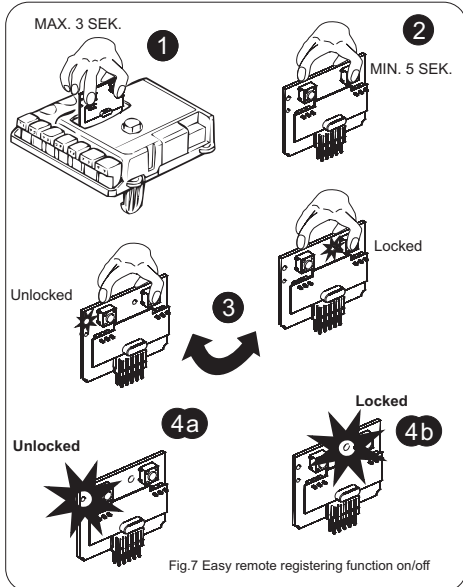
Unsuccessful remote registering may be caused by:

- ▶ low battery of any of remotes
- ▶ radio interference from other sources
- ▶ lock of easy remote registering function (point 4)
- ▶ using other than DTM remote in registering

3. Remote button function change

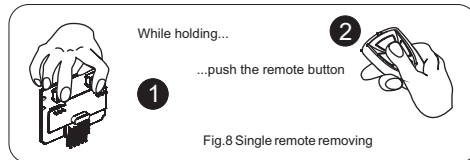
- ▶ remove remote from card memory (point 5)
- ▶ register remote again (point 1 or 2)

4. Easy remote registering function lock/unlock



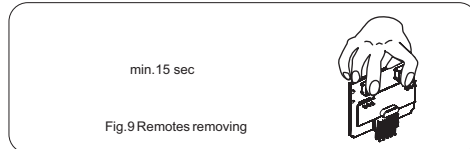
To secure device from unwanted remote registering (aspecial protected customers areas) it is recommended to lock easy remote registering function. To lock easy remote registering function push and hold simultaneously both of buttons. Then release one of the buttons (any of two buttons, the other one must be pushed till the procedure is finished). After 4 seconds C1 diode will light (means that easy remote registering function is unlocked). Still hold the button, after another 4 seconds C2 diode will light (means that easy remote registering function is locked). After releasing the button card will remember the settings and easy remote registering function will be locked. Same procedure is to unlock easy remote registering, just release the button when C1 diode light. By default – factory settings, easy remote registering function is locked.

5. Remote removing



Caution!
If you hold receivers button for more than 10 sec it may cause receiver's memory format and removing all the remotes

6. All remotes removing



Caution!
While formatting receiver memory all remotes will be removed and easy remote registering function will be unlocked.

V. DTM433MHz remote parameters

- ▶ four (two) buttons that can control any channel or the group channels
- ▶ signal transmission is based on Microchips® KeeLoq® dynamically variable code,
- ▶ remote frequency 433,92 Mhz
- ▶ up to 150m radio range NEO, 50m TIP
- ▶ battery: L1028 23A 12V,
- ▶ ERP TIP: 1 mW, NEO: 3 mW;
- ▶ working temperature from 0°C to +55°C.
- ▶ four (two) buttons that can control any channel or the group channels
- ▶ signal transmission is based on Microchips® KeeLoq® dynamically variable code,
- ▶ remote frequency 433,92 Mhz

VI. Warranty

DTM System checks all the devices before shipping. The warranty time is 24 months from the selling date. This time is counted according to the warranty label. The manufacturer will fix all the problems which come because of his fault. Non functioning device should be delivered back to the distributor with short problem description. The cost of mount/dismount is covered by user. The warranty do not cover: batteries in the remotes, faults caused by improper usage, user self repairs and adaptations, lightning strikes, over voltages or short circuits in the mains supply. Appropriate legal acts regulates details of the warranty.

DTM System hereby declares that the radio receiver complies with Directive 2014/53 / EU. The full text of the EU Declaration of Conformity is available at the Internet address.: www.dtm.pl



The intention of the WEEE Directive (Directive 2002/96/EC on waste electrical and electronic equipment) is to reduce the amount of hazardous substances in waste. The underlying purpose is to promote the avoidance, recovery and risk-free disposal of waste.

