

TRX radio card for SWIFT control board

Manual

v.0.1



1. General information

TRX radio card is designed for remote control on DTM System SWIFT series control board. Radio card is compatible with DTM433MHz series remote controls, transmission is based on KeeLoq® Microchip®.

2. Technical data

- ▶ cooperation with DTM433MHz series remotes and other producer remotes on MULTI version
- ▶ cooperation with gate controllers SWIFT series
- ▶ superheterodyne receiver, frequency: 433MHz
- ▶ receiver memory 35 remotes
- ▶ possibility of easy remote adding, without need to use card buttons
- ▶ possibility to lock easy remote adding function
- ▶ power supply via control board connector
- ▶ max current consumption 15mA;
- ▶ operating temperature -20°C to +55°C;
- ▶ dimensions: 43mm x 38mm x 8mm.

3. Card installation

To install the card press the plate with the edge connector into the socket located on the controller board (10 pins) as shown in Fig.1C. Clip in controller board connector needs to reach TRX radio card slot. Depending on the driver card should be installed:

- SWIFT6-CB - side which buttons are placed, facing up (Fig.1A)
- SWIFT624-CB - towards the controller board edge (Fig.1B)

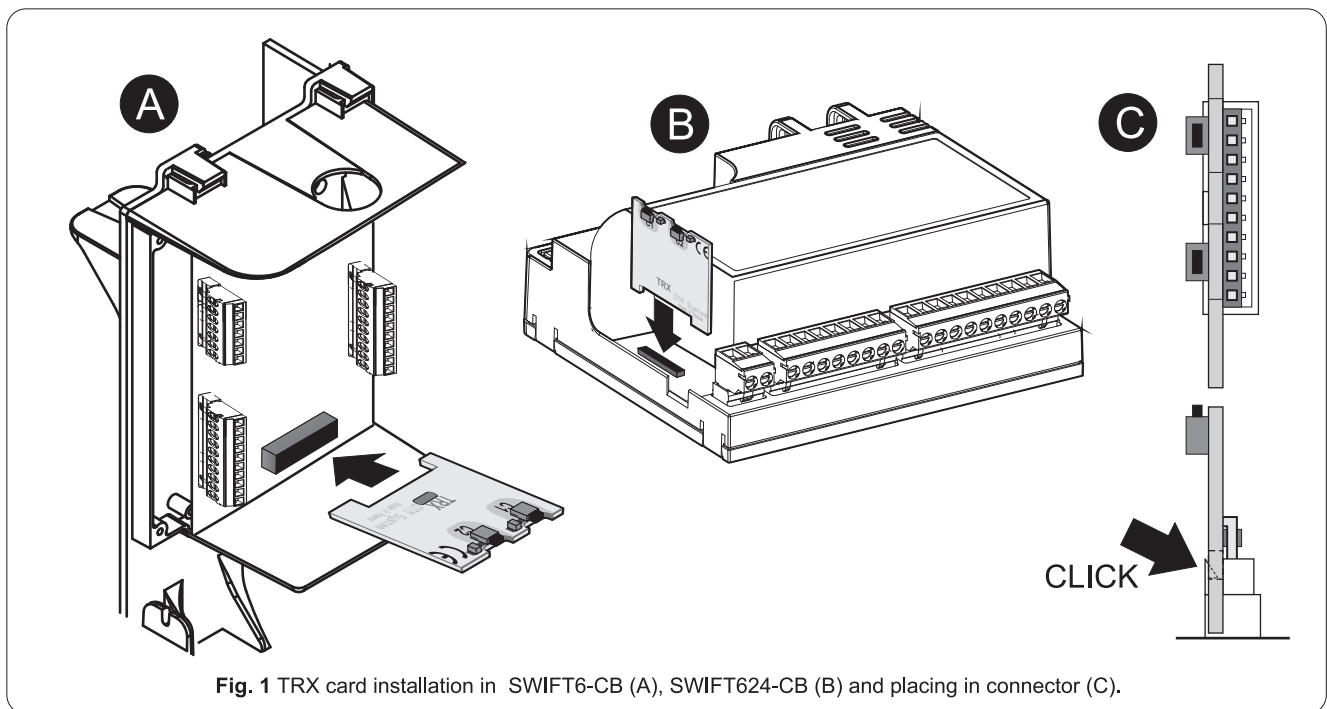


Fig. 1 TRX card installation in SWIFT6-CB (A), SWIFT624-CB (B) and placing in connector (C).

In order to achieve optimal radio range coverage be aware of:

- ▶ **negative impact of antenna neighborhood to electricity devices and metal objects;**
- ▶ **negative effects of radio interference from sources other than the remote;**
- ▶ **negative impact of dense development, humid, or concrete walls;**
- ▶ **reducing the range of the remote with used battery**

4. TRX card programming

4.1. Adding a remote

Adding a remote is assigning remote button to choosen radio card channel. Button will control automation according to control board settings. It is possible to assign several buttons to one channel or one button to both channels.

TRX radio card has two programmable C1 and C2 channels. To assign remote to second channel follow steps as for first channel (using analogue second channel button).

To assign any remote button to first channel:

- press and hold C1 channel button
- while holding C1 channel button press choosen remote button
- C1 channel LED flashes, indicating success of operation
- release C1 button

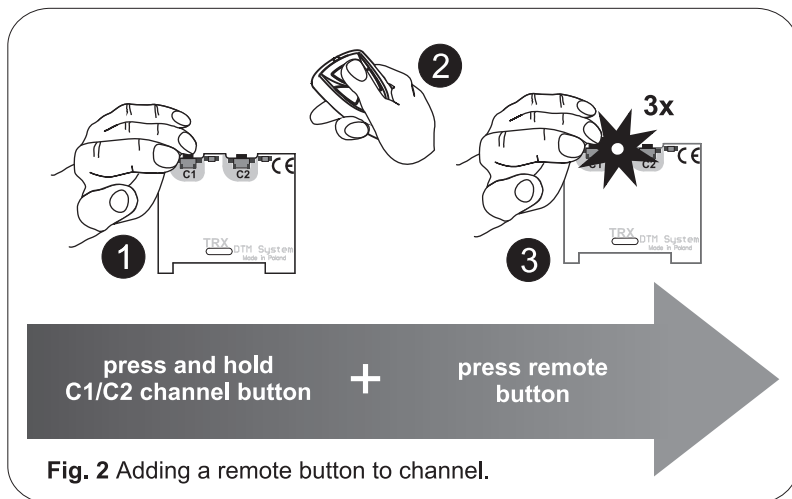


Fig. 2 Adding a remote button to channel.

4.2. Easy remote adding

Easy remote adding function allows adding remotes without physical access to receiver buttons. It is necessary to have previously added remote and being in radio range of the receiver.

For easy remote adding:

- press and hold for 15 second any button of previously added remote
- in time no longer than 3 seconds, after releasing previously added remote button, press and hold for 15 second any button of remote you want to add

Remote will be added to receiver memory with identical buttons configuration as previously added remote, used in this procedure.

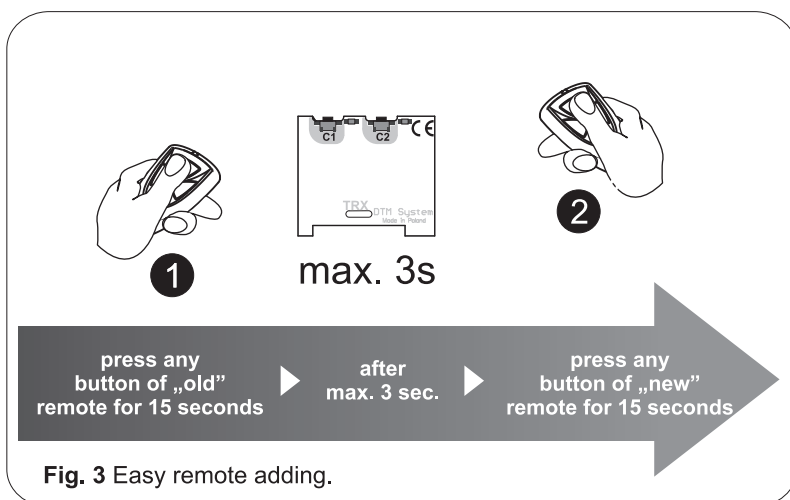


Fig. 3 Easy remote adding.



Easy remote adding function is available only for DTM433MHz series remotes



Failure in adding may be caused by low battery of any remotes or radio interferences.

4.3. Easy remote adding function locking / unlocking.

To secure device against unwanted remote adding (especially important in access protected areas) easy remote adding function must be locked.

To lock / unlock easy remote adding function press C1 and C2 buttons on the receiver, then release one button, C1 or C2. After 5 seconds C1 and C2 LEDs start to alternately light up every 5 seconds. Releasing second button when:

- C1 LED lights - will unlock easy remote adding function
- C2 LED lights - will lock easy remote adding function



In factory settings (after receiver format), easy remote adding function is unlocked.



Releasing second button of receiver before 5 seconds after releasing first button, will cause leaving the procedure without saving.

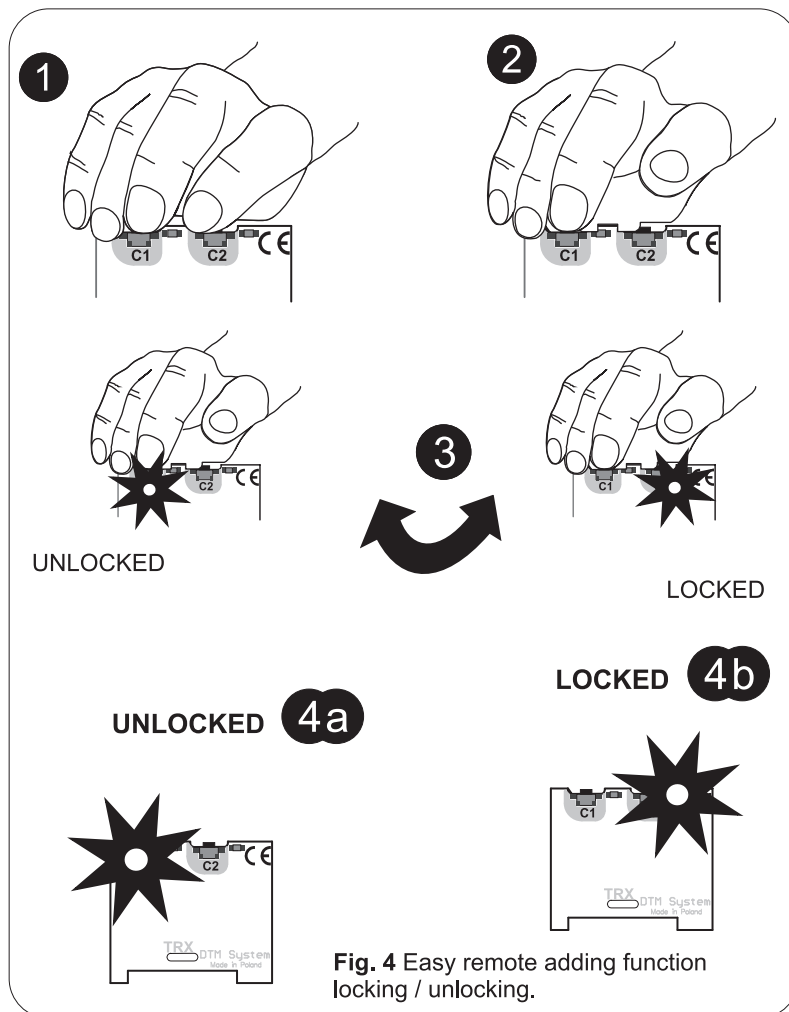


Fig. 4 Easy remote adding function locking / unlocking.

4.4. Deleting one remote from memory

To delete remote from receiver memory press and hold both C1 and C2 programming buttons. C1 and C2 LEDs will pulse. During LEDs pulsing press any button of remote you want to delete. LEDs light off, remote deleted.



Pressing C1 and C2 button over 10 seconds will format receiver memory.

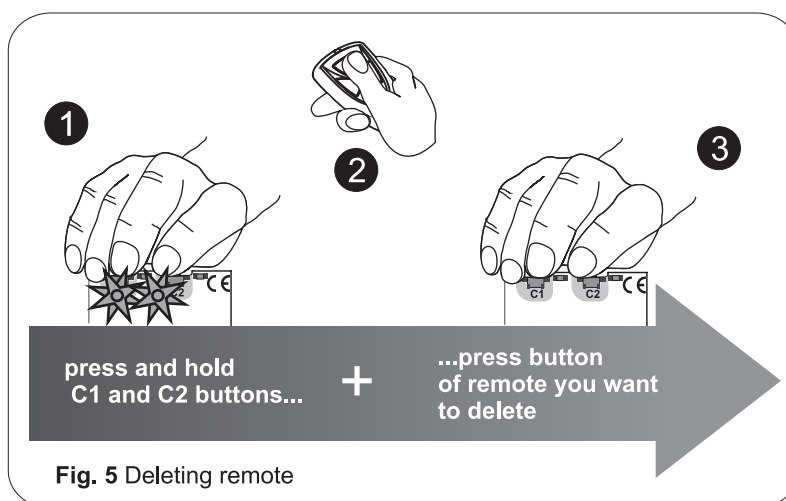


Fig. 5 Deleting remote

TRX radio card for SWIFT control board

Manual

v.0.1

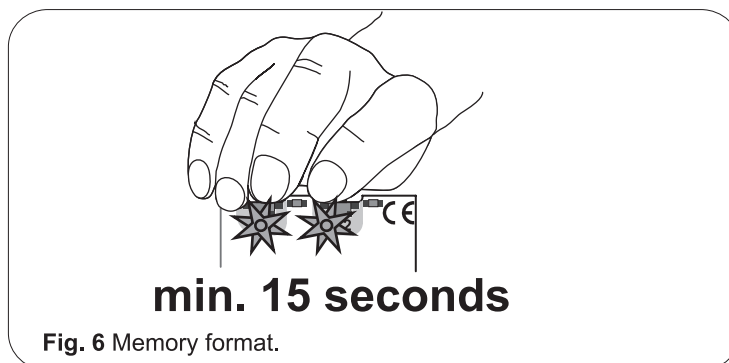
4.5. Card memory format.

To format memory press and hold C1 and C2 buttons. C1 and C2 LEDs will pulse. Release button after LEDs light off, after about 15 seconds.



Memory format:

- deletes all remotes from memory
- unlocks easy remote adding function



WARRANTY

DTM System provides operational and ready to use devices. The producer gives 24 months warranty from the selling date to the end customer. This time is counted according to the producer warranty labels or serial numbers placed on every product. Producer obliges himself to repair the device for free if during the warranty period there are problems which come because of his fault. Broken device should be supplied on customer's expense to the place of purchase and enclose clear and brief description of the breakage. The cost of mount/dismount is covered by the user. The warranty does not cover: batteries in the remote controls, faults caused by improper usage, user self repairs and adaptations, lightning strikes, voltages or short circuits in the electrical grid. Appropriate legal acts regulate details of the warranty.



DTM System hereby declares that the radio receiver complies with Directive 2014/53/EU. The full text of the EU Declaration of Conformity is available at the Internet address.

www.dtm.pl



Electrical or electronic devices cannot be removed with everyday waste. The correct recycling of devices gives the possibility of keeping natural resources of the Earth for a longer time and prevents the degradation of natural environment.

DTM System spółka z ograniczoną odpowiedzialnością spółka komandytowa

ul. Brzeska 7
85-145 Bydgoszcz

TEL:
+48 52 340 15 83

FAX:
+48 52 340 15 84

E-MAIL:
serwis@dtm.pl