



**NEW!**

## **GALACTIC**

Save Time & Money

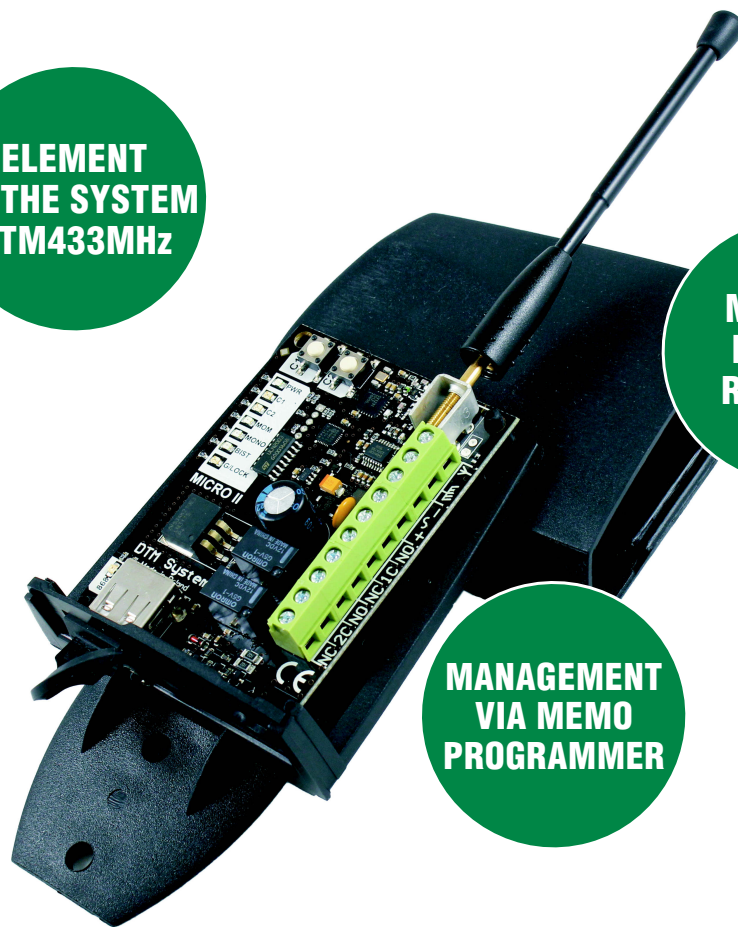
- programming remotes in the office
- self-activation by the user
- 65 000 installations with a unique code



**ELEMENT  
OF THE SYSTEM  
DTM433MHz**

**MEMORY  
FOR 200  
REMOTES**

**MANAGEMENT  
VIA MEMO  
PROGRAMMER**

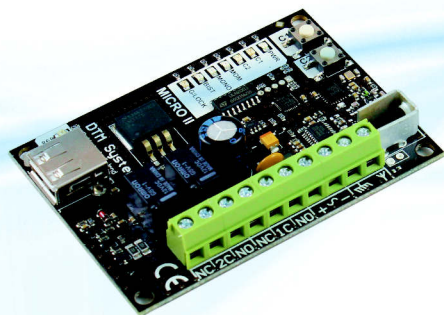


## **MICRO II**

**- 868 -**

- service lock
- splash-proof housing with an external antenna
- power supply 12...24V AC/DC

Simple programming and expanded possibilities of this 2-channel external receiver are ideally suited for remote control of gate automation and other devices, according to customer needs.



# MICRO II

- 868

2- channel radio receiver

## ➤ Basic parameters

power supply: 12...24VAC/DC  
max power consumption: 100mA  
memory capacity: 200 remotes of DTM868MHz  
operating temperature (min./max): -20°C/+55°C  
electronic plate dimensions  
(W x D x H): 79x57x18mm  
housing external dimensions: 98(plus 40 housing holder)x79x33mm  
mounting: splash-proof plastic housing, IP-53  
weight: 125g

## ➤ Executives elements

relay outputs  
(type/number/maximum load): NO or NC / 2 / 1A (24VAC/DC)  
Output modes: monostable, bistable or momentary  
Output hold time adjustment  
in monostable mode: 0.5 s, from 1 to 127s with a resolution of 1 second, and from 1 minute to 127min with a resolution of 1min

## ➤ Radio parameters

radio module: modern, digital, superheterodyne with intelligent adaptation to external radio conditions, high reliability, repeatability and optimum sensitivity  
transmission protection: 104-bit IRS  
modulation / frequency: FSK / 868MHz  
input impedance of the antenna: 50 Ω  
antenna: rod antenna, terminals for connecting an external antenna

## ➤ Functionality

user interface: hardware interface with seven LED's and two buttons, simple menu  
remote configuration: the ability to assign any of the two channels to any remote button  
deleting single remote: necessity of having deleted remote  
adding remote without access  
to receiver buttons: easy remote registering function with the ability to lock and unlock the function, Galactic function - allows adding remotes programmed and configured outside the installation  
service lock: ability to deactivate the operation of remotes entered into receiver  
management of the receiver: using receiver buttons and by connecting MEMO programmer  
number of remotes in memory verification: function show the number of added remotes

Radio  
Receivers

Remotes

Gate  
Controllers

Gate  
Automation  
Accessories

Gate  
Motors

Access  
Control



automation systems

DTM System, ul. Brzeska 7, 87-145 Bydgoszcz, POLAND, tel./fax +48 52 340 15 83, e-mail: dtm@dtm.pl  
[www.dtm.pl](http://www.dtm.pl)

