



NEW!

GALACTIC

Save Time & Money

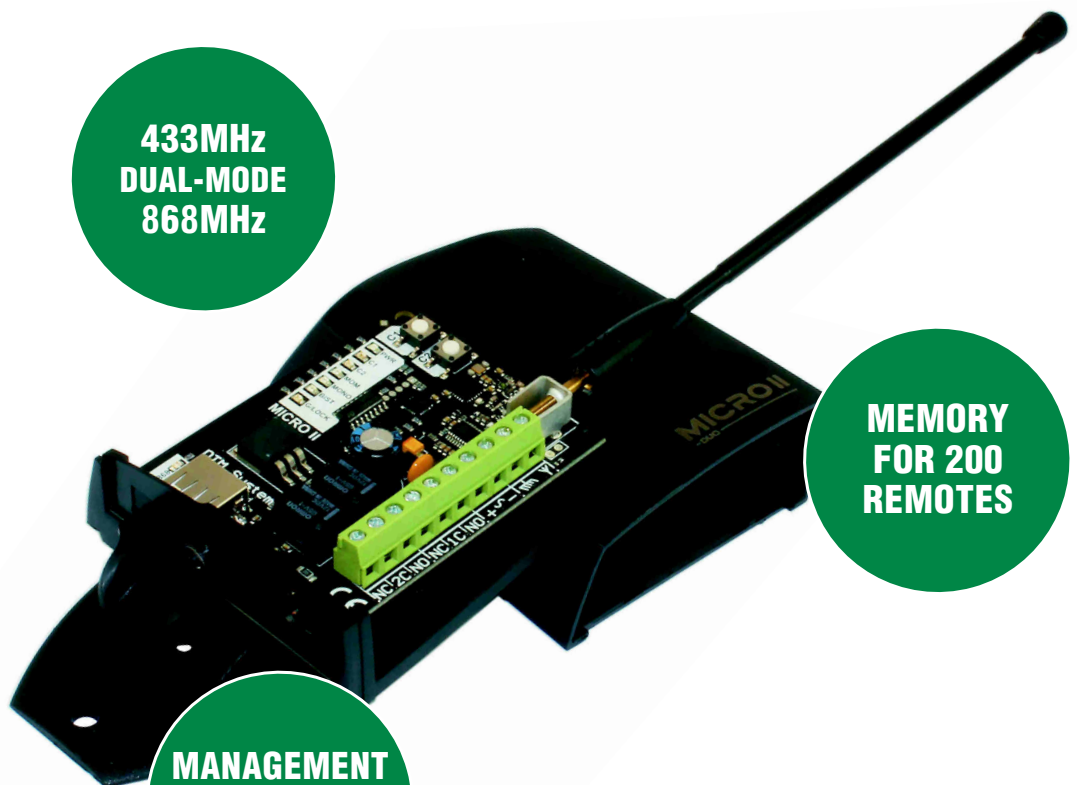
- programming remotes in the office
- self-activation by the user
- 65 000 installations with a unique code



**433MHz
DUAL-MODE
868MHz**

**MANAGEMENT
BY MEMO
PROGRAMMER**

**MEMORY
FOR 200
REMOTES**

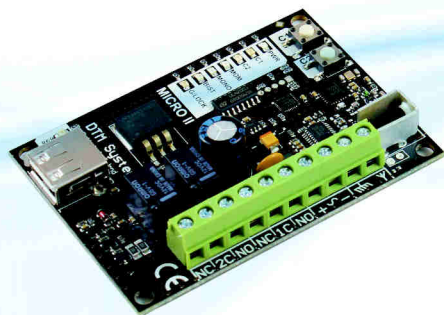


MICRO II

-DUO-

- service lock
- splash-proof housing with an external antenna
- power supply 12...24V AC/DC

Simple programming and expanded possibilities of this 2-channel external receiver are ideally suited for remote control of gate automation and other devices, according to customer needs.



MICRO II

- DUO

2- channel radio receiver

➤ Basic parameters

power supply: 12...24VAC/DC
 max power consumption: 100mA
 memory capacity: 200 remotes of DTM433MHz and/or DTM868MHz
 operating temperature (min./max): -20°C/+55°C
 electronic plate dimensions
 (W x D x H): 79x57x18mm
 housing external dimensions: 98(plus 40 housing holder)x79x33mm
 mounting: splash-proof plastic housing, IP-53
 weight: 125g

➤ Executive elements

relay outputs
 (type/number/maximum load): NO or NC / 2 / 1A (24VAC/DC)
 Output modes: monostable, bistable or momentary
 Output hold time adjustment
 in monostable mode: 0.5 s, from 1 to 127s with a resolution of 1 second, and from 1 minute to 127min with a resolution of 1min

➤ Radio parameters

radio module: modern, digital, superheterodyne with intelligent adaptation to external radio conditions, high reliability, repeatability and optimum sensitivity
 transmission protection: 64-bit Keeloq® and 104-bit IRS
 modulation / frequency: OOK / 433,92Mhz and FSK / 868MHz
 input impedance of the antenna: 50 Ω
 antenna: rod antenna, terminals for connecting an external antenna

➤ Functionality

user interface: hardware interface with seven LED's and two buttons, simple menu
 remote configuration: the ability to assign any of the two channels to any remote button
 deleting single remote: necessity of having deleted remote
 adding remote without access
 to receiver buttons: easy remote registering function with the ability to lock and unlock the function, Galactic function - allows adding remotes programmed and configured outside the installation
 service lock: ability to deactivate the operation of remotes entered into receiver
 management of the receiver: using receiver buttons and by connecting MEMO programmer
 number of remotes in memory verification: function show the number of added remotes

Radio
Receivers

Remotes

Gate
Controllers

Gate
Automation
Accessories

Gate
Motors

Access
Control



automation systems

DTM System, ul. Brzeska 7, 87-145 Bydgoszcz, POLAND, tel./fax +48 52 340 15 83, e-mail: dtm@dtm.pl
www.dtm.pl

