

1. General information

TRX radio card is designed for remote control on DTM System SWIFT series control board. Radio card is compatible with DTM868MHz series remote controls

2. Technical data

- ▶ cooperation with DTM868MHz series remotes;
- ▶ cooperation with gate controllers SWIFT series;
- ▶ frequency: 868 MHz;
- ▶ receiver memory 200 remotes;
- ▶ possibility to add remotes programmed outside installation - GALACTIC function;
- ▶ possibility of easy remote adding, without need to use card buttons;
- ▶ possibility to lock easy remote adding function;
- ▶ power supply via control board connector;
- ▶ max current consumption 30mA;
- ▶ operating temperature -20°C to +55°C;
- ▶ dimensions: 43mm x 38mm x 8mm.

3. Card installation

To install the card press the plate with the edge connector into the socket located on the controller board (10 pins) as shown in Fig.1C. Clip in controller board connector needs to reach TRX radio card slot.

Depending on the driver, card should be installed:

- SWIFT6-CB - side which buttons are placed, facing up (Fig.1A);
- SWIFT624-CB - towards the controller board edge (Fig.1B)

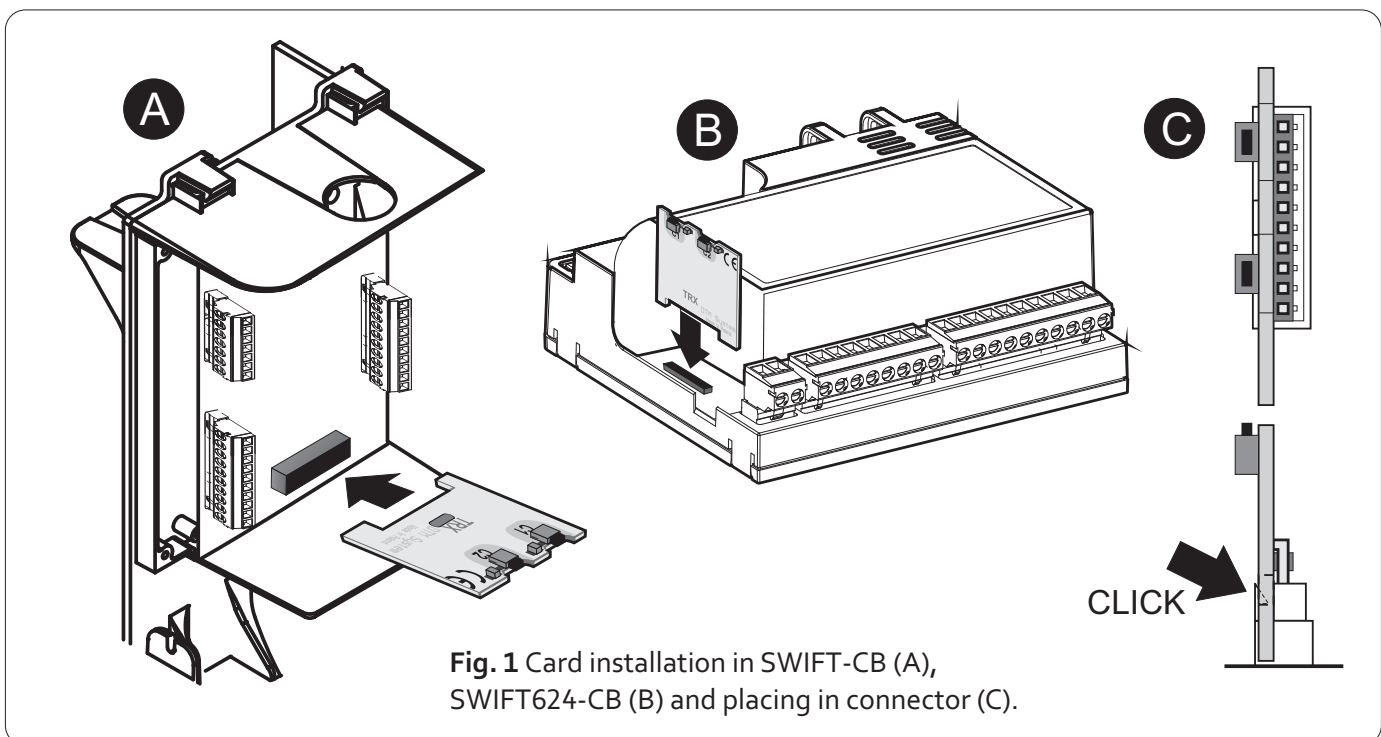


Fig. 1 Card installation in SWIFT-CB (A), SWIFT624-CB (B) and placing in connector (C).

In order to achieve optimal radio range coverage be aware of:

- ▶ negative impact of antenna neighborhood to electricity devices and metal objects;;
- ▶ negative effects of radio interference from sources other than the remote;
- ▶ negative impact of dense development, humid, or concrete walls;
- ▶ reducing the range of the remote with used battery.

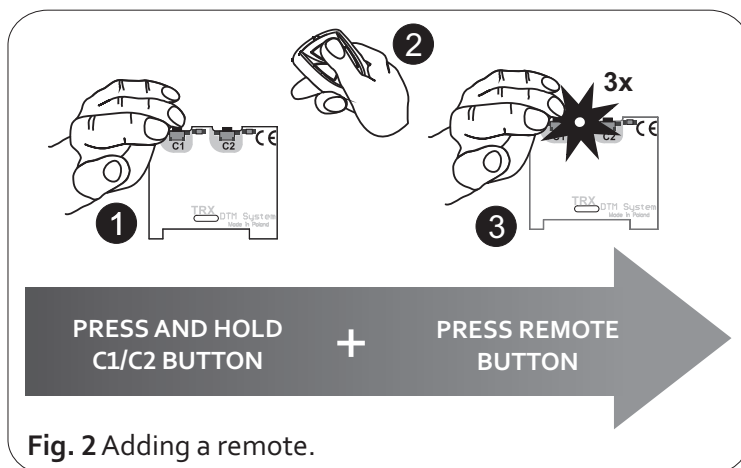
4. TRX 868 card programming

4.1. Adding a remote

Adding a remote is assigning remote button to chosen radio card channel. Button will control automation according to control board settings. It is possible to assign several buttons to one channel or one button to both channels. TRX 868 radio card has two programmable C1 and C2 channels. To assign remote to second channel follow steps as for first channel (using analogue second channel button).

To assign any remote button to first channel:

- ▶ press and hold C1 channel button,
- ▶ while holding C1 channel button press chosen remote button,
- ▶ C1 channel LED flashes, indicating success of operation,
- ▶ release C1 button.

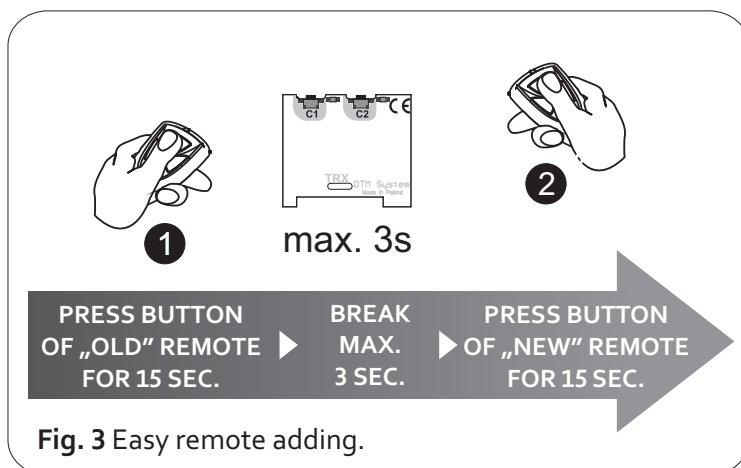


4.2. Easy remote adding

Easy remote adding function allows adding remotes without physical access to receiver buttons. It is necessary to have previously added remote and being in radio range of the receiver.

For easy remote adding:

- press and hold for 15 second any button of previously added remote,
- in time no longer than 3 seconds, after releasing previously added remote button, press and hold for 15 second any button of remote you want to add.



Remote will be added to receiver memory with identical buttons configuration as previously added remote, used in this procedure..



Failure in adding may be caused by low battery of any remotes or radio interferences.

DTM System spółka z ograniczoną odpowiedzialnością spółka komandytowa

ul. Brzeska 7
85-145 Bydgoszcz

TEL:
+48 52 340 15 83

FAX:
+48 52 340 15 84

E-MAIL:
serwis@dtm.pl

4.3. Easy remote adding function locking / unlocking.

To secure device against unwanted remote adding (especially important in access protected areas) easy remote adding function must be locked.

To lock / unlock easy remote adding function press C1 and C2 buttons on the receiver, then release one button, C1 or C2. After 5 seconds C1 and C2 LEDs start to alternately light up every 5 seconds. Releasing second button when:

C1 LED lights - will unlock easy remote adding function

C2 LED lights - will lock easy remote adding function

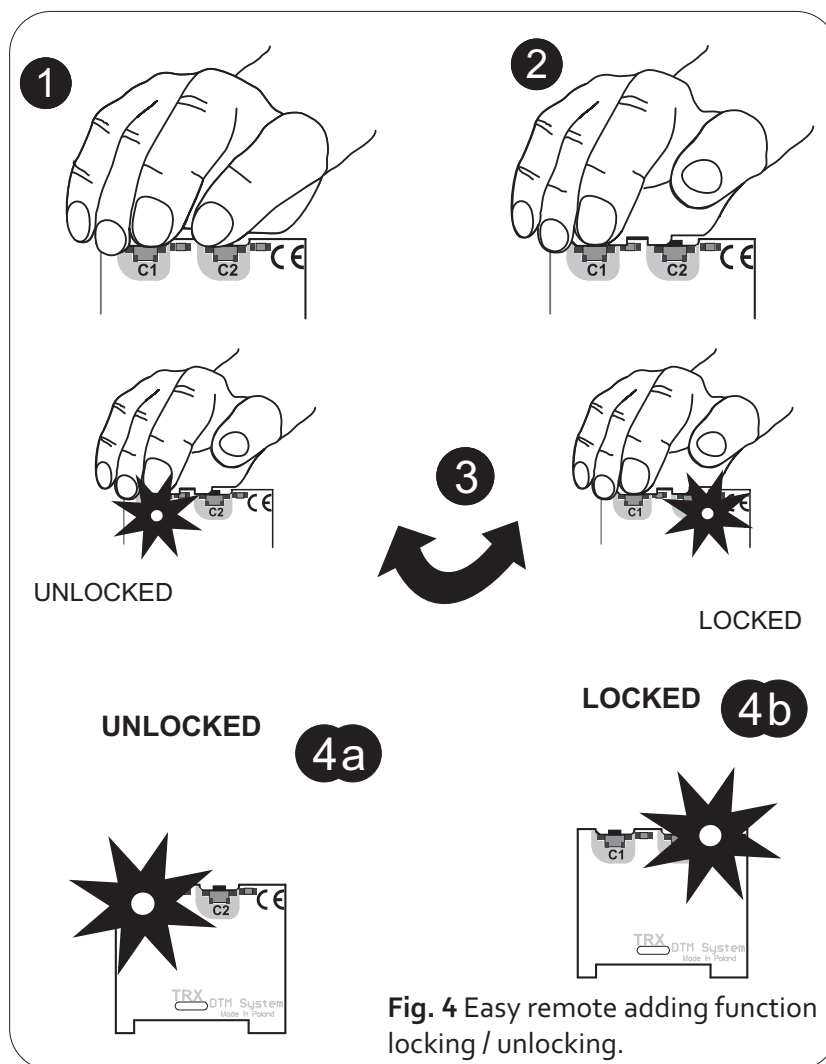


Fig. 4 Easy remote adding function locking / unlocking.



In factory settings (after receiver format), easy remote adding function is unlocked.



Releasing second button of receiver before 5 seconds after releasing first button, will cause leaving the procedure without saving.

DTM System spółka z ograniczoną odpowiedzialnością spółka komandytowa

ul. Brzeska 7
85-145 Bydgoszcz

TEL:
+48 52 340 15 83

FAX:
+48 52 340 15 84

E-MAIL:
serwis@dtm.pl

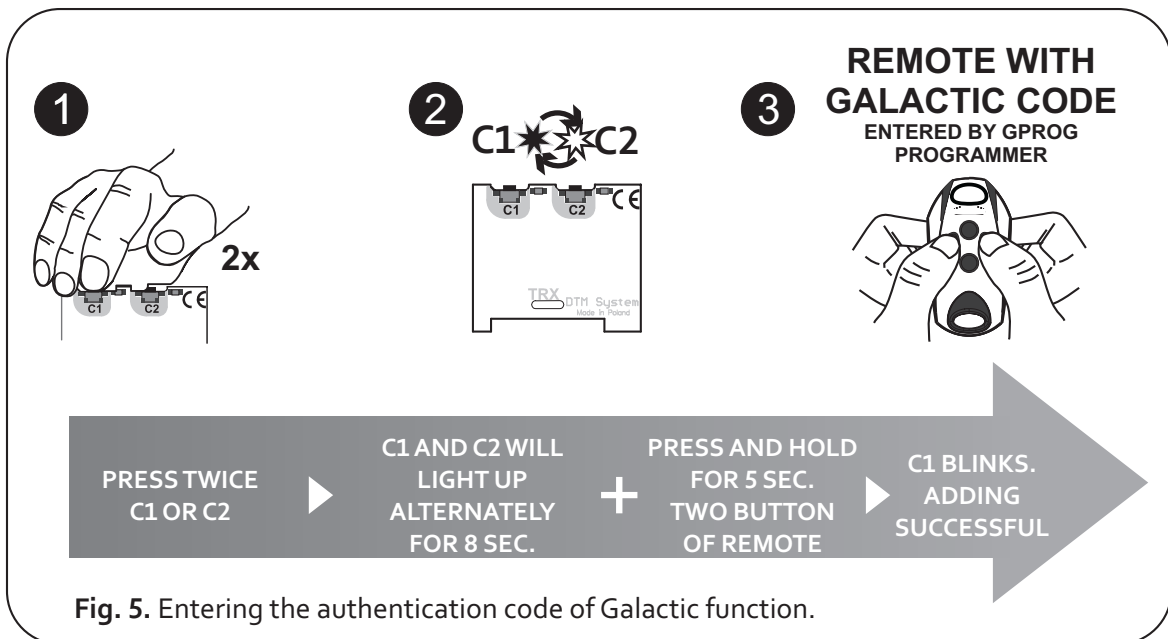
4.4. Entering the authentication code of Galactic function



To enter the authentication code to the receiver, it is necessary to have a remote with GALACTIC function. Remote has to have set the authentication code, entered by GPROG programmer.

To enter an authentication code to the receiver, press twice C1 or C2 button. C1 and C2 LEDs will start blinking for 8 seconds. During this time, press and hold for 5 seconds two buttons of the remote with Galactic function. From this moment the authentication code is set in the receiver and remotes with Galactic function can be added. (see point 4.6.).

If within 8 seconds after pressing C1/C2 button twice, code is not entered, or entering the code fails, the C1 LED does not blink but immediately light up.



The frequency of C1 and C2 LEDs flashing after double-pressing the C1/C2 button, indicates whether the authentication code is set or not.



Very fast blinking (10 blink per second) indicates that there is no code entered in the receiver. Slow blinking (1 blink per second) indicates the authentication code of Galactic function is set in the receiver.

4.5. Deleting the authentication code of GALACTIC function from the receiver.

To delete the authentication code, you must have the remote with GALACTIC function, with use of which the code has been entered.

To delete the code, press the C1 or C2 button twice. C1 and C2 LEDs will blink slowly for 8 seconds. During this time, press for 5 seconds, any two buttons on the remote, with use of which the code has been entered.

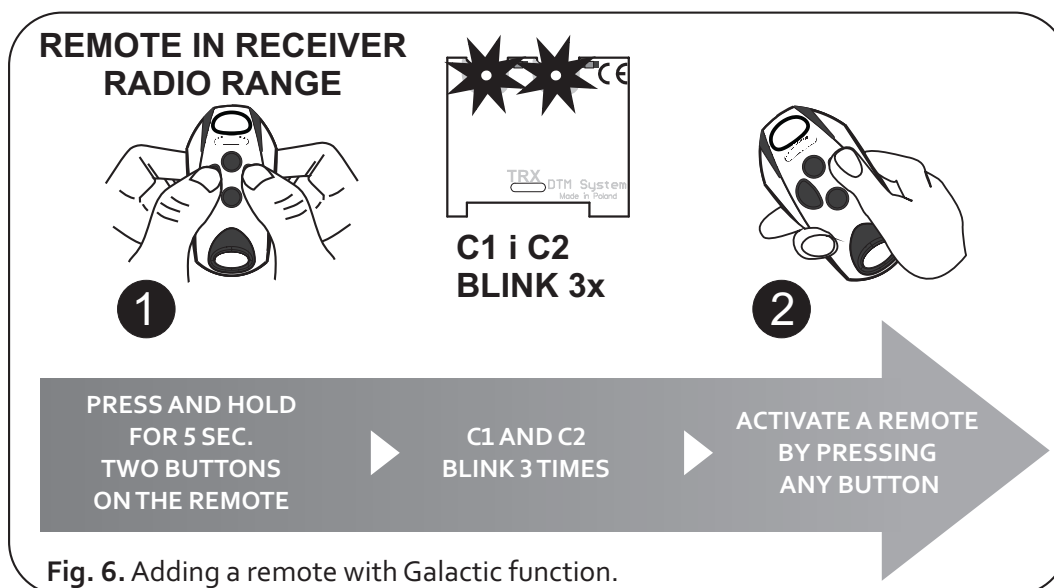


The authentication code of GALACTIC function is being removed after formatting the memory (see point 4.8.).

4.6. Registering the remote with Galactic function

The condition for the success of registering the remote with Galactic function, is the compatibility of authentication codes set in the receiver and the remote.

In order to register the remote, press and hold for 5 seconds, two buttons on the remote, in the receiver radio range. Successful adding is indicated by three blinks of C1 and C2 LEDs. To activate remote in the receiver, press any button on the remote.

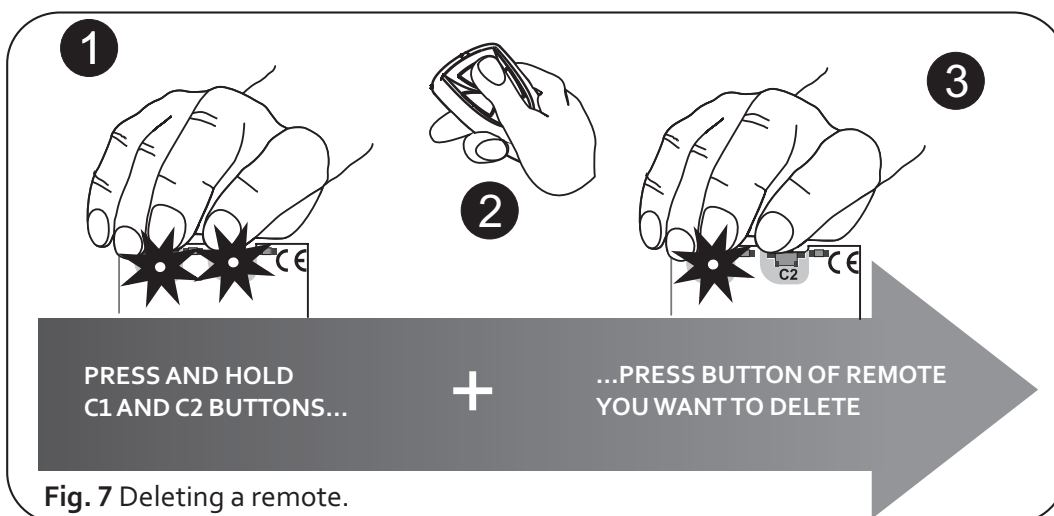


Fail in registering the remote can be caused by:

- ▶ incompatibility of the authentication codes in the receiver and the remote,
- ▶ low battery of the remote,
- ▶ radio interference that may occur during the procedure,
- ▶ the receiver memory is full.

4.7. Deleting a single remote

To delete the remote, simultaneously press and hold down C1 and C2 buttons on the receiver. C1 and C2 LEDs will flash, then press the remote button. Successful deleting is indicated by C1 LED blink and C2 LED light off.



Pressing C1 and C2 buttons too long, lead to card memory format.

DTM System spółka z ograniczoną odpowiedzialnością spółka komandytowa

ul. Brzeska 7
85-145 Bydgoszcz

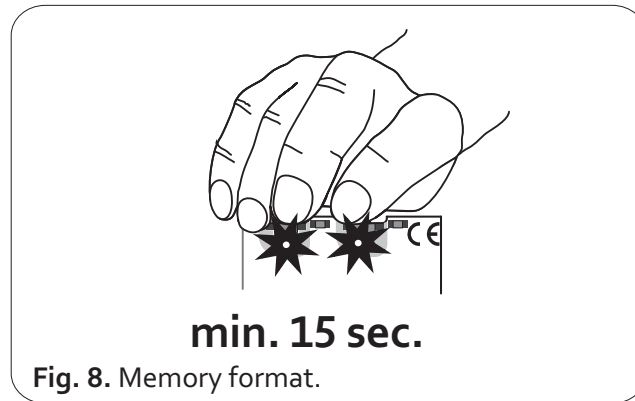
TEL:
+48 52 340 15 83

FAX:
+48 52 340 15 84

E-MAIL:
serwis@dtm.pl

4.8. Card memory format

To format memory press and hold C1 and C2 buttons. C1 and C2 LEDs will pulse. Release button after



LEDs light off, after about 15 seconds.

Memory format:

- ▶ deletes all remotes from memory,
- ▶ unlocks easy remote adding function,
- ▶ removes GALACTIC authentication code.

4.9. Verifying the number of registered remotes

To verify the number of registered remotes, prior registering or deleting the remote is required.

After registering or deleting the remote, hold receiver button for 5 more seconds. C1 LED will blink showing number of registered remotes. First number of tens (from 0 to 20 long pulses), then number of units (from 0 to 9 short pulses). Example showing the number of pulses is shown in Fig.9.

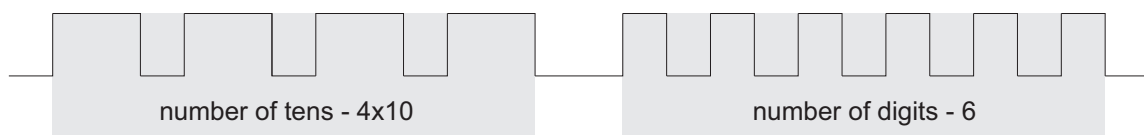


Fig. 9. Example showing pulses of 46 registered remotes

WARRANTY

DTM System provides operational and ready to use devices and gives 24 months warranty from the selling date to the end customer. This time is counted according to the producer warranty labels or serial numbers placed on every product. DTM System obliges itself to repair the device for free if during the warranty period there are problems which come because of its fault. Broken device should be supplied on customer's expense to the place of purchase and enclose clear and brief description of the breakage. The cost of mount/dismount is covered by the user. The warranty does not cover any faults caused by improper usage, user self repairs, regulations and adaptations, lightning strikes, voltages or short circuits in the electrical grid. Appropriate legal acts regulate details of the warranty.

DTM System spółka z ograniczoną odpowiedzialnością spółka komandytowa

ul. Brzeska 7
85-145 Bydgoszcz

TEL:
+48 52 340 15 83

FAX:
+48 52 340 15 84

E-MAIL:
serwis@dtm.pl

TRX 868 radio card for SWIFT control board Manual



DTM System hereby declares that the radio receiver complies with Directive 2014/53 / EU. The full text of the EU Declaration of Conformity is available at the Internet address.

www.dtm.pl



Electrical or electronic devices cannot be removed with everyday waste. The correct recycling of devices gives the possibility of keeping natural resources of the Earth for a longer time and prevents the degradation of natural environment.

DTM System spółka z ograniczoną odpowiedzialnością spółka komandytowa

ul. Brzeska 7
85-145 Bydgoszcz

TEL:
+48 52 340 15 83

FAX:
+48 52 340 15 84

E-MAIL:
serwis@dtm.pl