

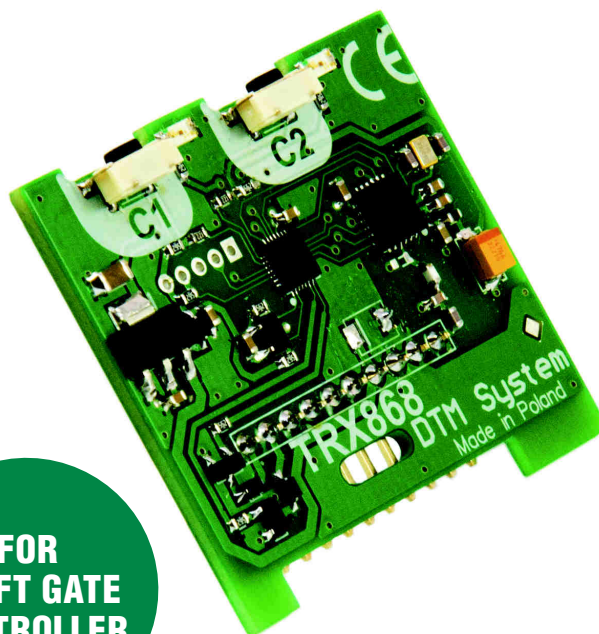


NEW!

## GALACTIC

Save Time & Money

- programming remotes in the office
- self-activation by the user
- 65 000 installations with a unique code



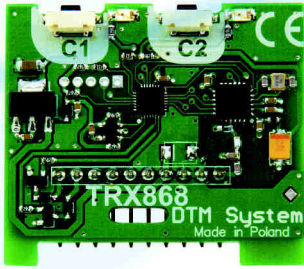
FOR  
SWIFT GATE  
CONTROLLER

- easy to install
- simple programming
- power supply from the controller
- compatible with DTM868MHz

## TRX 868

TRX 868 radio card is designed for SWIFT control boards. It allows to operate two channels and 200 DTM868MHz remote controls.





# TRX 868

radio card for gate controllers

## Parameters

power supply: from gate controller  
memory: 200 DTM868MHz remotes  
operating temperature (min./max): -20°C/+55°C  
card external dimensions: 43x38x8mm  
mounting: into gate controller via connector  
weight: 7g

## Executive elements

relay output: 2 open collector outputs

## Radio parameters

radio module: modern, digital, superheterodyne with intelligent adaptation to external radio conditions, high reliability, repeatability and optimum sensitivity  
transmission protection: 104-bit IRS  
modulation / frequency: FSK / 868MHz

## Functionality

user interface: hardware interface with two LED's and two buttons, simple menu  
remote configuration: the ability to assign any of the two channels to any remote button  
deleting single remote: necessity of having deleted remote  
adding remote without access to receiver buttons: easy remote registering function with the ability to lock and unlock the function, Galactic function - allows adding remotes programmed and configured outside the installation  
verifying the number of remotes in memory: function shows the number of added remotes

Radio  
Receivers

Remotes

Gate  
Controllers

Gate  
Automation  
Accessories

Gate  
Motors

Access  
Control



automation systems

DTM System, ul. Brzeska 7, 87-145 Bydgoszcz, POLAND, tel./fax +48 52 340 15 83, e-mail: dtm@dtm.pl  
[www.dtm.pl](http://www.dtm.pl)

