



# Galactic

FUNCTION OF REMOTE ASSIGNING OF REMOTE CONTROLS

user manual

v.1.1



automatic systems  
[www.dtm.pl](http://www.dtm.pl)





## TABLE OF CONTENTS

<b>GENERAL INFORMATION</b>	3
1.Principle of operation of Galactic function	3
<b>ELEMENTS OF GALACTIC SYSTEM</b>	4
<b>I. GPROG PROGRAMMER</b>	4
1. Principle of operation	4
2. Technical data.	4
3. Elements of the programmer	4
4. Connecting to the computer.	4
<b>II. GSOFTE PROGRAMME</b>	5
1. Purpose	5
2. System requirements	5
3. Installation and start-up	5
4. Programme main window.	7
5. Programme functions.	9
5.1. Remote control programming	9
5.1.1. Remote control programming manual configuration	10
5.1.2. Remote control programming profile choice	11
5.1.3. Deleting remote control	12
5.2. Profiles list	13
5.2.1. Adding the profile.	13
5.2.2. Profile edition	14
5.2.3. Deleting the profile	14
5.3. Profiles databases	15
5.3.1. Creating new profiles database.	15
5.3.2. Profiles database export	16
5.3.3. Profiles database import.	17
5.4. Programme access security	18
5.4.1. Setting the password	18
5.4.2. Changing the password	19
5.4.3. Deleting the password	19
<b>III. REMOTE CONTROL WITH GALACTIC FUNCTION</b>	20
<b>IV. RECEIVER WITH GALACTIC FUNCTION.</b>	20
<b>PRACTICAL GALACTIC FUNCTION</b>	21

## GENERAL INFORMATION

Galactic is new functionality of DTM System devices operating on 868MHz frequency designed for increasing the comfort of work. It allows for remote assigning of the remote control without both physical access to the receiver and the necessity of possession of remote control that was assigned earlier.

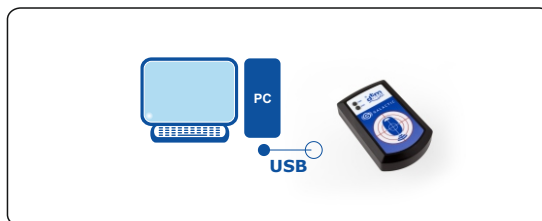
Assigning the remote control with Galactic function is based on the compliance verification of the so called authentication code of the remote with the authentication code set in the radio receiver. The remote control is going to be assigned if the authentication code is identical with the authentication code set in the receiver.

 Devices with Galactic function are specified by  logo on the casing.

### 1. PRINCIPLE OF OPERATION OF GALACTIC FUNCTION

**1**

Install and run GSOFT software on your computer, available for download on the producer's website [www.dtm.pl](http://www.dtm.pl), and connect the GPROG programmer.



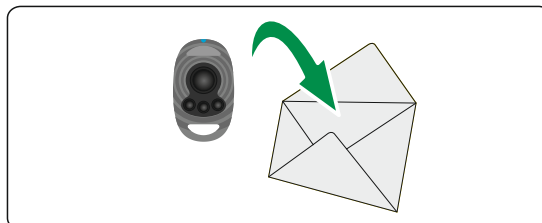
**2**

Programme the remote control with the use of GPROG programmer by entering the authentication code compliant with the code of the receiver to which the remote control is going to be assigned.



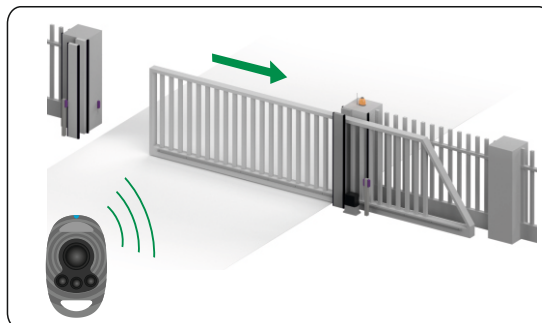
**3**

The remote control programmed with the correct authentication code can be delivered to the user.



**4**

The user in the radio range of the receiver initiates assigning of the transmitter to the receiver by pressing any two buttons of the remote control for 5 seconds.



## ELEMENTS OF GALACTIC SYSTEM

### I. GPROG PROGRAMMER

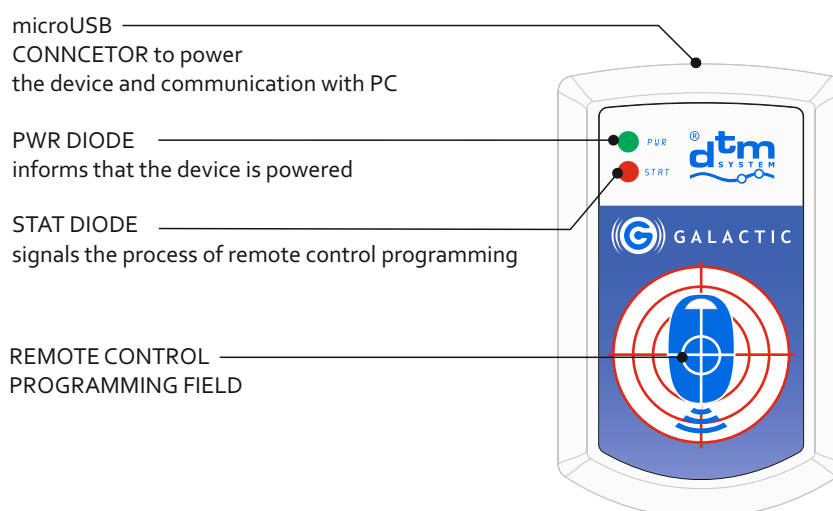
#### 1. PRINCIPLE OF OPERATION

GPROG programmer is a device which allows for wireless programming of the remote controls with Galactic function.

#### 2. TECHNICAL DATA

power supply	5V
operating range	2-3 cm
external case size	55x20x90 mm

#### 3. ELEMENTS OF THE PROGRAMMER



**Fig. 1** View of GPROG programmer with elements description.

#### 4. CONNECTING TO THE COMPUTER

Programmer should be connected to the computer with the USB cable from the set.



GRPOG programmer is identified by Windows® operating system and it does not require installation of the drivers.

## II. GSOF T PROGRAMME

### 1. PURPOSE

GSOF T is a computer programme dedicated to operate GPROG programmer.


### 2. SYSTEM REQUIREMENTS

- PC computer with MSWindows® versions NT/XP/Vista/7/8/10
- it is required to install .net framework version 4.0 or newer

### 3. INSTALLATION AND START-UP


Download the GSOF T program from the producer's website [www.dtm.pl](http://www.dtm.pl). Run the Gsetup.exe installation file. During the installation proceed according to the guidelines of the programme installer. After the installation run GSOF T programme and connect GPROG programmer to the computer with the use of USB cable.

Power and readiness to work are signaled by the green diode PWR on the GPROG programmer panel.

If the GPROG programmer is connected correctly there is a notice in information window "Programmer status: CONNECTED" and the icon: 



**Fig. 2** View of the main window of GSOF T programme with the information about correct connection of the GPROG programmer.

In case of problems with the connection there is a notice in information window: "Programmer status: NO DEVICE" and the icon: 



**Fig. 3** View of the main window of GSOFT programme with the information about the lack of connection of the GPROG programmer.

#### 4. PROGRAMME MAIN WINDOW



**Fig. 4** View of GSOFT programme main window with function description.

- ① "Programming" with the icon informing about the connection or lack of connection.
- ② "Profiles list" enables creating profiles databases.
- ③ "Remote programming" button starts remote control programming operation.
- ④ "Bank" choice. Every page is one of three banks where one profile can be saved.
- ⑤ "Delete remote" button starts remote control deleting operation.
- ⑥ "Profile selection" field. It gives possibility to custom profile and write in data manually or choose profile for fast loading data available in profiles base.



- ⑦ Remote model selection field.
- ⑧ "Authentication code" field to write in authentication code.
- ⑨ Table of remote control buttons and receiver channels connection. Marking the fields assigns remote buttons to the channels.
- ⑩ Information field. It displays notices about current status of programme and programmer.
- ⑪ "Options" button which opens the window of access password settings.
- ⑫ "About the programme" button which opens window with basic information about the programme and files to download.
- ⑬ "Exit" button which closes the programme.
- ⑭ Field of language selection. To change the language click chosen flag.
- ⑮ Visualization of chosen remote with button numbers.





## 5. PROGRAMME FUNCTIONS

### 5.1 REMOTE CONTROL PROGRAMMING



To programme the remote it is necessary to enter appropriate **data: authentication code** which consists of four alphabetical and numerical signs 0-9 and A-F and **connections of remote buttons and receiver channels**. Data should be entered in the main window of application (fig.4 pt 8 and 9).

If the user is not in the main window it is necessary to choose "Programming" (fig.4 pt 1). Remote control with Galactic function gives the possibility to sign in the memory from one to three authentication codes together with configuration of buttons and channels connections. The choice of appropriate bank enables data edition. Bank 1 is the basic bank and it is always sent to the remote. Bank2 and Bank3 are optional. Bank2 and Bank3 edition is possible after marking the "Active Bank" choice field. When the fields of choice and edition are grey it means that there is no possibility to edit the data.

Data can be entered by manual configuration or by choosing earlier added profile. GSOFTE programme gives the possibility to delete data from programmable remote controls.

### 5.1.1. REMOTE CONTROL PROGRAMMING - MANUAL CONFIGURATION

- 1 Put the remote control with Galactic function on shown place on the GPROG programmer.



- 2 Choose "Custom profile" in the "Profile selection" field.

Profile selection Custom profile

- 3 Choose appropriate remote in "Remote selection".

Remote selection Neo2 Galactic

- Neo1 Galactic
- Neo2 Galactic
- Neo3 Galactic

- 4 Enter authentication code that consists of 4 letters or digits from 0-9 and A – F (so called hexadecimal value) in the "Authentication code" field.

Authentication code 1234 ?

FFFF is the only combination that is not allowed.

- 5 Choose appropriate assignment of remote buttons and receiver channels in the table "Remote buttons assignment to receiver channels".

Remote buttons assignment to receiver channels				
Button	Channel 1	Channel 2	Channel 3	Channel 4
1	<input type="checkbox"/>	<input type="checkbox"/>	<input type="checkbox"/>	<input checked="" type="checkbox"/>
2	<input type="checkbox"/>	<input type="checkbox"/>	<input checked="" type="checkbox"/>	<input type="checkbox"/>
3	<input type="checkbox"/>	<input checked="" type="checkbox"/>	<input type="checkbox"/>	<input type="checkbox"/>
4	<input checked="" type="checkbox"/>	<input type="checkbox"/>	<input type="checkbox"/>	<input type="checkbox"/>

- 6 When it is necessary to configure the remote to work with more than one receiver go to Bank2 and/or Bank3 tab and after activating the bank enter the data as in Bank1.

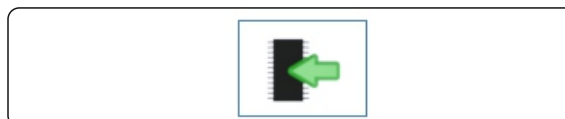
Bank 1 Bank 2 Bank 3

☒ Activate Bank 2

Profile selection Custom profile

The choice of remote control is done only once in Bank1.

- 7 Press "Remote programming" button after finishing edition.



- 8 Correct programming is confirmed by the following notice shown in the information window "PROGRAMMING SUCCESSFUL!"

Programmer status: **CONNECTED**

[1]Programming in progress - wait

-----

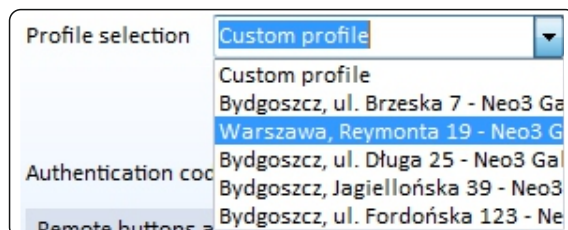
**PROGRAMMING SUCCESSFUL!**

### 5.1.2.REMOTE CONTROL PROGRAMMING - PROFILE CHOICE

- 1 Put the remote control with Galactic function on shown place on the GPROG programmer.

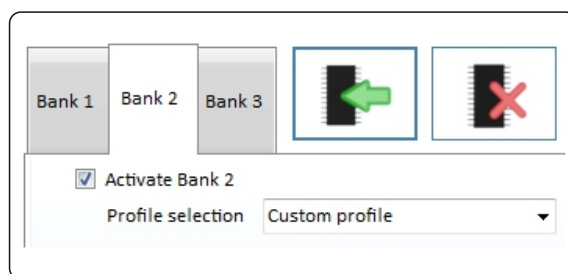


- 2 Choose one of available and earlier configured profiles in the "Profile selection" field.



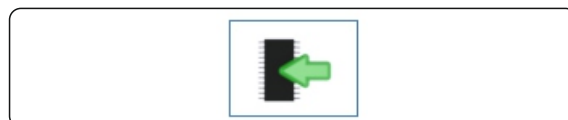
Profile configuration – pt 5.2

- 3 When it is necessary to configure the remote to work with more than one receiver go to Bank2 and/or Bank3 tab and after activating the bank enter the data as in Bank1.

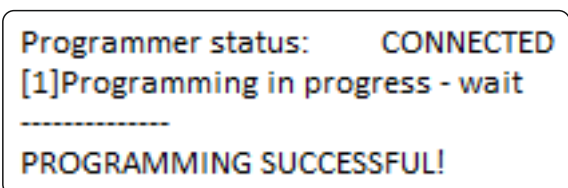


Profiles in the database are configured for particular type of the remote control. Choosing profile in Bank1 causes setting the type of remote control and switching off the possibility to change the type of remote manually in the rest of the banks. As a consequence profiles configured for the same type of the remote control as in Bank1 are only going to be available in Bank2 and Bank3.

- 4 Press "Remote programming" button after finishing edition.



- 5 Correct programming is confirmed by the following notice shown in the information window "PROGRAMMING SUCCESSFUL!"



### 5.1.3. DELETING REMOTE CONTROL MEMORY

- 1 Put the remote control with Galactic function on shown place on the GPROG programmer.



- 2 Press "Delete remote" button.



- 3 Deleting the memory of remote control is signaled by the notice "DELETING SUCCESSFUL" shown in information window.

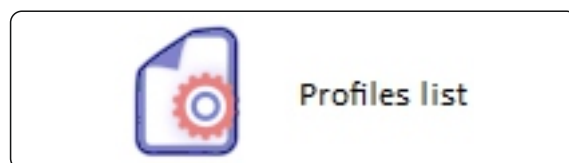
Programmer status: **CONNECTED**  
[1]Deleting in progress - wait  
-----  
**DELETING SUCCESSFUL!**

## 5.2. PROFILES LIST

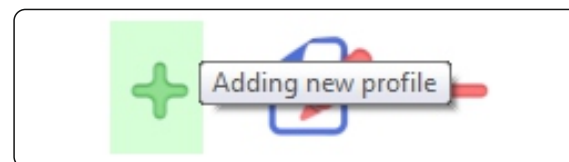
To increase the comfort of using the programme it was equipped with module for simple creating and managing the profile database. It allows the user to use ready profile by choosing "Profile selection" when they want to programme particular remote control.

### 5.2.1. ADDING THE PROFILE

- 1 Go to adding and editing profiles window and click "Profiles list" icon (fig.4 pt 2).

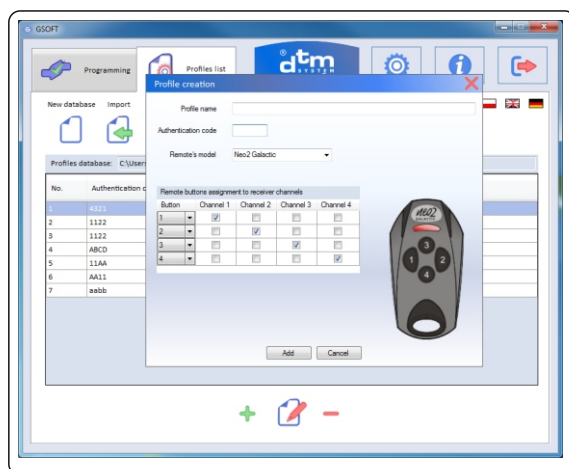


- 2 Click "+" icon. New profile creating window is opened.



- 3 Fill in all the necessary information about the profile:
  - name of the profile (e.g. address of the installation),
  - authentication code,
  - remote model,
  - remote buttons assignment to receiver channels.

After finishing edition press "Add". If there is no information a notice is shown and missing field in marked red.



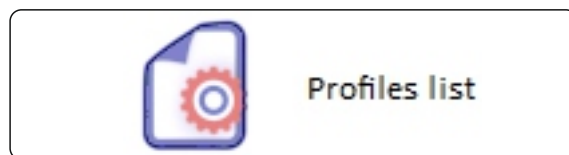
The table of assignment is filled with button columns only after choosing the remote type.



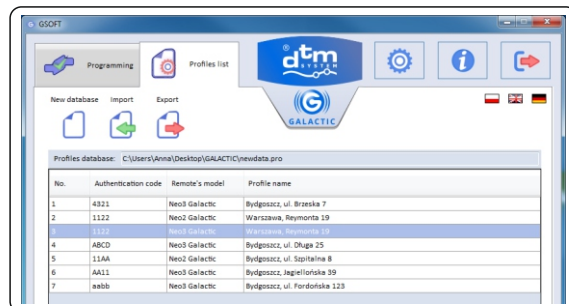
Adding new profile causes new item to appear both on the profiles lists and "Profile selection" list.

## 5.2.2. PROFILE EDITION

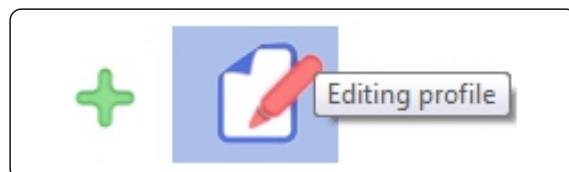
- 1 Go to adding and editing profiles window by clicking "Profiles list" icon (fig.4 pt 2).



- 2 Specify on the profiles list which profile is to be edited.

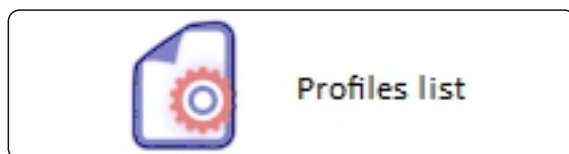


- 3 Double click on the profile shown or click "Editing profile" icon. Editing profile window is opened. After introducing changes in profile data click "Save" button.

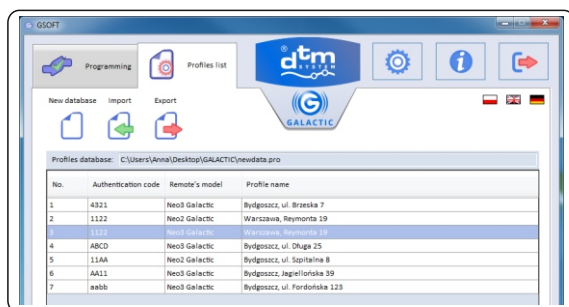


## 5.2.3. DELETING THE PROFILE

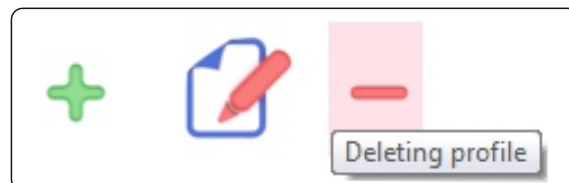
- 1 Go to adding and editing profiles window by clicking "Profiles list" icon (fig.4 pt 2).



- 2 Specify on the profiles list which profile is to be deleted.



- 3 Click "Deleting profile" icon. Window confirming the deleting is opened. After choosing "Yes" the profile is deleted.



The operation of deleting the profile cannot be reversed.

### 5.3. PROFILES DATABASES

GSOFT programme enables to create profiles databases. The user has the possibility to create many profiles databases, exporting and importing data from the files.

#### 5.3.1. CREATING NEW PROFILES DATABASE

**1**

Go to adding and editing profiles window by clicking "Profiles list" icon (fig.4 pt 2).



Profiles list

**2**

Click "New database" icon. "Save as" window is opened and there it is necessary to specify the location and name for the base file. Empty database file is created.

New database



It is necessary to create profiles database with the first running of the GSOFT programme. Profiles database is automatically saved to the file after every adding, editing and deleting operation

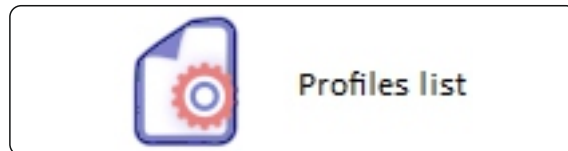


After the start GSOFT programme reads in the database which was last opened if it is available.

### 5.3.2. PROFILES DATABASE EXPORT

The user has the possibility to export active profiles database to the new file.

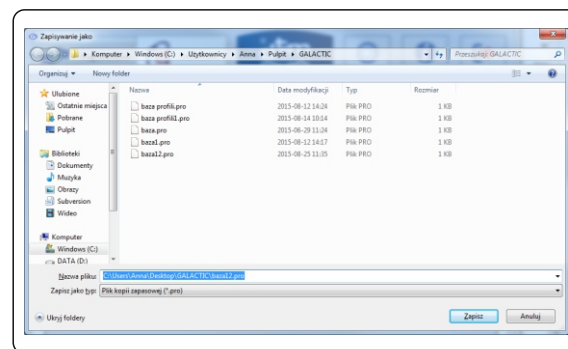
- 1 Go to adding and editing profiles window by clicking "Profiles list" icon (fig.4 pt 2).



- 2 Click "Export" button. Window "Save as" appears.



- 3 It is necessary to specify the location and enter the name of the file in the "Save as" window. Next click "Save" button.



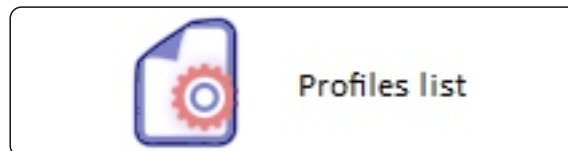
Exporting database does not change the database currently read in. To change the database which the programme is supposed to work on it is necessary to use "Import" function (pt 5.3.3).



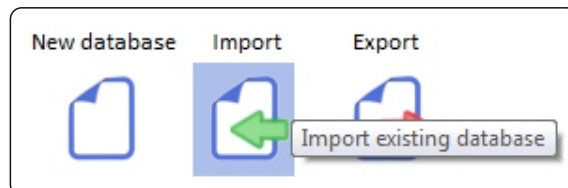
### 5.3.3. PROFILES DATABASE IMPORT

"Import" option is used to read into the programme data from other, earlier created and exported profiles database.

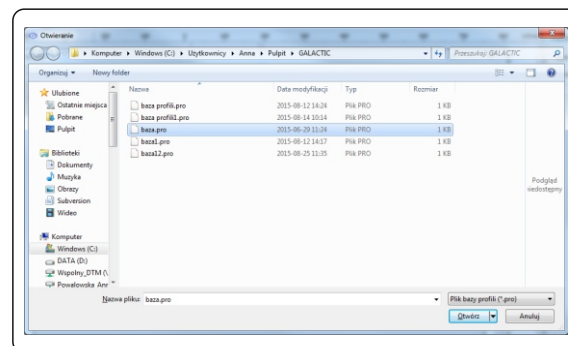
- 1 Go to adding and editing profiles window by clicking "Profiles list" icon (fig.4 pt 2).



- 2 Click "Import" button. Window "Open" appears.



- 3 It is necessary to specify the location and the file which is supposed to be imported in the "Open" window. Next click "Open" button.

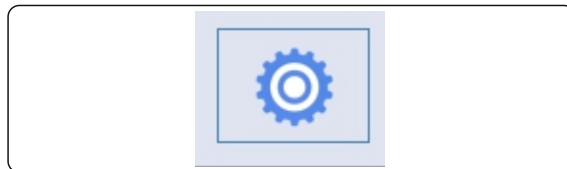


## 5.4. PROGRAMME ACCESS SECURITY

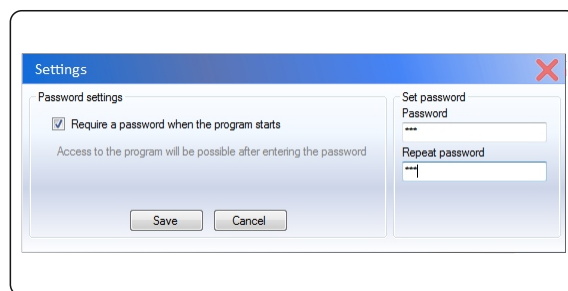
To ensure protection against access of unauthorized people, the programme gives the possibility to set the password. It is switched off as default.

### 5.4.1. SETTING THE PASSWORD

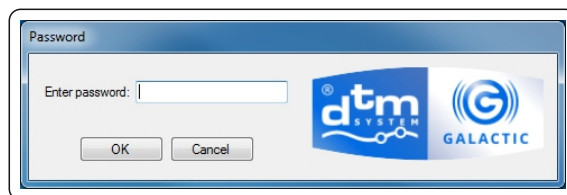
- 1 Click "Options" button (fig.4 pt 11). Window of password setting appears.



- 2 Mark "Require a password when the programme starts" option box. It enables to edit "Set password" field. After entering the password and its confirmation click "Save" button.



- 3 From this moment the programme shows the password window at the start.



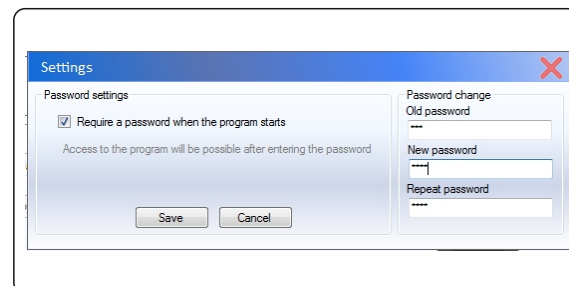
Programme is not started until the correct password is written in.

## 5.4.2. CHANGING THE PASSWORD

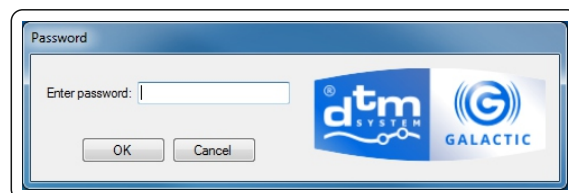
- 1 Click "Options" button (fig.4 pt 11). Window of password setting appears.



- 2 When the password is set, "Require a password when the programme starts" option box is marked and instead "Set password" it is visible "Password change" field where it is possible to change the password by giving old password and writing the new password twice.



- 3 From this moment the programme shows the password window at the start where it is necessary to enter new changed password.



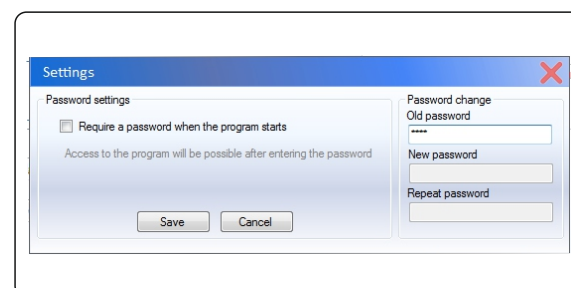
Programme is not started until the correct password is written in.

## 5.4.3. DELETING THE PASSWORD

- 1 Click "Options" button (fig.4 pt 11). Window of password setting appears.



- 2 Unmark "Require a password when the programme starts" option box and write in access password in "Old password" field and next click "Save" button. The password is not going to be required while starting the programme.

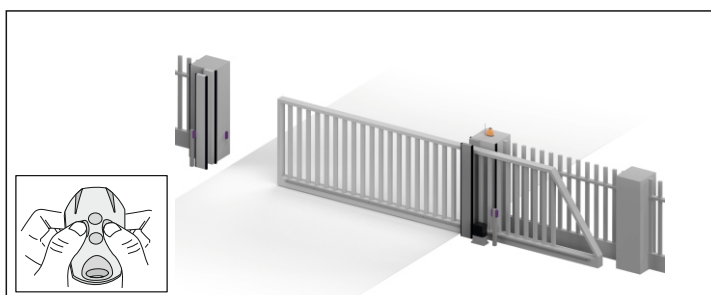


### III. REMOTE CONTROL WITH GALACTIC FUNCTION

The only thing that distinguishes remote controls with Galactic function from the outside from other remotes operating in DTM868MHz system is Galactic logo. They are equipped with radio detector which is used to receive transmission from GPROG programmer. Every remote control has at least 3 memory banks for programming data. It allows to assign three authentication codes to one remote control together with configuration of assignment of remote buttons and receiver channels. Thanks to this function the remote control can work with three different receivers or receiver groups according to specified configurations set individually. To assign programmed remote with the use of Galactic function it is necessary to press and hold in the receiver radio range any two remote buttons for five seconds. The remote control transmits adding packet once. From this moment the remote is added to the receiver and works with the configuration of buttons specified when programmed.

Every remote control with Galactic function can be added to the receiver also manually with the use of receiver's buttons and the function of remote signing in.

Remote control with Galactic function can be removed from the receiver in the way appropriate for given receiver. There is no possibility to remove the remote control remotely with the use of Galactic function.



**Fig. 5** Assigning programmed remote with the use of Galactic function.

### IV. RECEIVER WITH GALACTIC FUNCTION

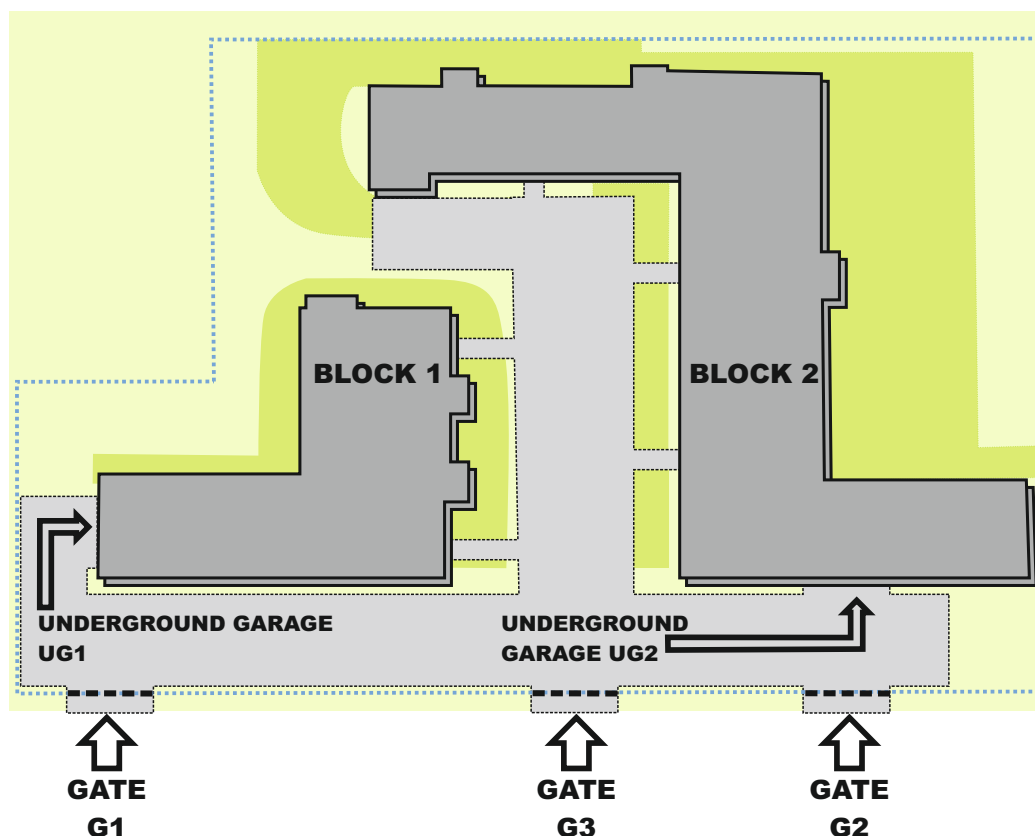
Receivers with Galactic function operate in DTM868MHz system. They are marked with the Galactic logo. To use the Galactic function it is necessary to set authentication code in the receiver. Depending on the type of the receiver the authentication code can be entered manually in receivers with display or with the use of remote control with the Galactic function in receivers without the display. The methods of setting, deleting and changing the authentication code are described in detail in manuals of the receivers with the Galactic function.

Until the authentication code is not set the Galactic function in the receiver is not active.

## PRACTICAL GALACTIC FUNCTION

To administer inhabitants access comfortably the installer can use the Galactic function by properly setting authentication codes of the receivers.

The example of such usage of the Galactic function is shown on the scheme below.



The complex consists of two fenced buildings: Block 1 and Block 2. There are 3 gates to the complex: G1, G2, G3 and two entrances to underground garages: UG1 and UG2. All of the five entrances are opened by radio system.

Inhabitants of block 1 have access to UG1 and gate G1.

Inhabitants of block 2 have access to UG2 and gate G2.

There is also possibility to park on the common car park on the complex grounds using the gate G3.

It is possible to create 3 groups of receivers. Every one of them has different authentication code.

group 1 – underground garage UG1 and gate G1 – authentication code of both receivers 1234

group 2 - underground garage UG2 and gate G2 – authentication code of both receivers ABCD

group 3 – car park on the grounds of the complex and gate G3 – authentication code 11AA



Inhabitants of block B1 receive remote controls programmed with the codes of groups 1 and 3. Thanks to this solution they have access to gate G1, underground garage UG1 and gate G3 to the common car park. Inhabitants of block B2 receive remote controls programmed with the codes of groups 2 and 3. Thanks to this solution they have access to gate G2, underground garage UG2 and gate G3 to the common car park. Administration of the complex receives remote controls programmed with the codes of groups 1, 2 and 3. Thanks to this solution they have access to all gates G1, G2, G3 and both underground garages UG1, UG2.

Access distribution can differ depending on the needs of given complex. There are no limits under one group to the number of the receivers to which the remote can be assigned. The remote control, however, can be programmed with maximum of three group codes.



## DISPOSAL



Electrical or electronic devices cannot be removed with everyday waste. The correct recycling of devices gives the possibility of keeping natural resources of the Earth for a longer time and prevents the degradation of natural environment.

## WARRANTY CONDITIONS

DTM System provides operational and ready to use devices. The producer gives 24 months warranty from the selling date to the end customer. This time is counted according to the producer warranty labels or serial numbers placed on every product. Producer obliges himself to repair the device for free if during the warranty period there are problems which come because of his fault. Broken device should be supplied on customer's expense to the place of purchase and enclose clear and brief description of the breakage. The cost of mount/dismount is covered by the user. The warranty does not cover: batteries in the remote controls, faults caused by improper usage, user self repairs and adaptations, lightning strikes, voltages or short circuits in the electrical grid. Appropriate legal acts regulate details of the warranty.



DTM System hereby declares that product complies with Directive 2014/53 / EU. The full text of the EU Declaration of

Conformity is available at the Internet address: [www.dtm.pl](http://www.dtm.pl)